



When **energy** matters

Powersmiths General Presentation

Discover the Socomec Brand

POW^eRSMiTHS
Socomec Group

 **socomec**
Innovative Power Solutions

Agenda

Powersmiths Training

01

Socomec Story

02

Product Presentation

03

Contact information

Agenda

Powersmiths Training

01

Socomec Story

02

Product Presentation

03

Contact information

About SOCOMEC

“

An electrical equipment design and manufacturing company, specializing in low voltage energy performance in terms of safety, service continuity, quality and energy efficiency.

”





Power Switching

Managing power and protecting people, equipment and installations



Power Monitoring

Improving energy performance and monitoring installations



Power Conversion

Maximizing power quality and availability



Energy Storage

Meeting the challenge of energy transition



Expert Services

Auditing, consulting, and maintenance ensuring safe, available and efficient energy



Data center



Healthcare



Energy



Infrastructure



Industry



Building

Our Markets

“Socomec is a specialist in the **safety, control, availability, continuity, quality** and **efficiency** of low voltage installations”



Socomec provides the most innovative solutions to ensure the energy performance of electrical installations. Manufacturing industrial switches, metering and monitoring equipment as well high-quality power systems.



Boltswitch specializes in bolted pressure contact and pullout switches. They are a US leader in the switchboard component market and developed the first UL listed Fused Power-Circuit devices.



CCS designs and manufactures metering devices, current transformers and custom energy measurement solutions, suitable for use in commercial, industrial and residential applications.



Powersmiths specializes in innovative power distribution, metering and integrated product solutions that advance your buildings' energy performance.



Founded in 1996, Powersmiths is a trusted partner for innovative and reliable power distribution and energy saving technologies for 26 years.

Our 2 manufacturing plants serve North America's:

- Data Center & Mission Critical Facilities
- Energy Savings Contractors (ESCOs)
- High Performance Buildings (Net Zero, LEED®, Sustainably Designed etc.)
- Commercial & Industrial Buildings; Healthcare, Federal, Municipal, Military, Education, Broadcasting, Entertainment, Airport, etc.



Acquired by Socomec in 2019.

Agenda

Powersmiths Training

01

Socomec Story

02

Product Presentation

PDU

RPP

STS

RTS

STS

ESS

UPS

Transformers

Metering

03

Contact information

Products Review



*Diris
Metering*
Building
Information
Solutions



*OPAL™
Transformers*
Energy
Efficient
Low-Voltage



ES RPP™
Remote
Power
Panel



ES PDU™
Modular
Power
Distribution
Unit



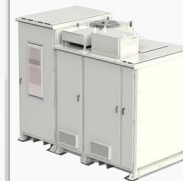
ES TX™
Integrated
Transforme
r



*ES
STATYS PS™*
Static
Transfer
Switching
System



MODULYS™
Modular
UPS
Solutions



ES RTS™
Modular
Ride
Through
System



*SUNSYS HES
L & XL™*
Energy Storage

Manufactured in ISO 9001, 14001 & 17025 certified facilities in North America & Europe

Agenda

Powersmiths Training

01

Socomec Story

02

Product Presentation

PDU

RPP

STS

RTS

ESS

UPS

Transformers

Metering



03

Contact information

Power Distribution Unit (PDU)

ENERGY STATION SM



Safe



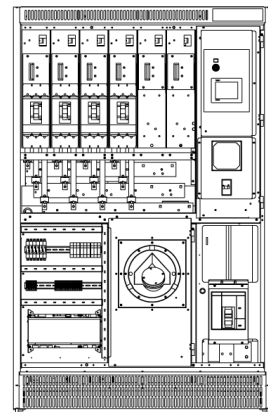
Robust



Compact

Engineered to order

- 50-1350kVA, Efficient OPAL™ Transformer
- Field Expandable, Sub-feed Breaker Options
- High Density
- Isolated Cold Tap
- Integrated Metering
- Integrated Panel Boards (RPPs)
- Multiple, Multi-Voltage Outputs
- 360° IR Port
- NEMA 3R Outdoor Rating
- Seismic Certified
- Safe Maintainability Options
- Outdoor Options



SM - Safe Maintainability



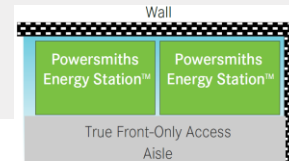
MARKET LEADER IN ENERGY EFFICIENCY

- Up to 99.4% efficiency
- Save significant energy & operating costs
- Lowers UPS load & losses
- Saves cooling BTUs and associated costs
- Efficiency options: 30-48% less loss than TP1



CONFIGURABLE DISTRIBUTION

- Extensive distribution configurations
- Mixed 120/208V to 230/400V, 277/480V outputs
- Sub-feeds: 100A - 600A
- Field expandable



Energy Station™ Footprint
(per NEC)

SMALL FOOTPRINT BIG SAVINGS

- True front-only access
- Eliminate 9-30 sq. ft. of floor space per unit
- Zero clearance required for sides and rear
- Highest power density

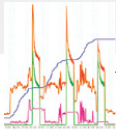


X1 to X4 (208 to 400V) X2 to X5 (208 to 400V) X3 to X6 (208 to 400V)

TRANSFORMER OPTIONS

- Multiple efficiency models
- K-Ratings
- Harmonic mitigation
- Full capacity migration: 120/208V to 230/400V
- Dual & triple voltage outputs

SM - Safe Maintainability



CYBERHAWK™ MONITORING

- Measure input & output power quality
- Built-in time stamped event logs
- Fast 1/2 cycle sag/swell detection
- Measure losses, efficiency & operating temperatures
- User friendly, menu-driven color touch screen
- Sub-feed and branch circuit monitoring
- Web server with Modbus TCP & BACnet IP support



SERVICEABILITY & SAFETY

- Hinged panel for quick & safe inspections
- 360° Rotatable IR Port™ for quick & safer thermal scans
- Front mounted controls for ease of service
- EPO disabler for service protection
- Debris trap in top vents



SEISMIC QUALIFICATION OPTION

- Full product line certified to SDS=2.5g
- OSHPD Seismic Certification (OSP-0351-10)
- IBC:2012 - 1705.12 Seismic Qualified
- ASCE 7-10 Chapter 13 Seismic Requirements



LOWEST ENVIRONMENTAL FOOTPRINT

- Compliant with sustainable procurement policies
- Operating efficiency lowers energy waste
- Lowers carbon footprint: Scope 2



POWERSMITHS MANUFACTURING

- Certified ISO 9001 - Quality Management
- Certified ISO 14001 - Environmental Management
- Certified ISO 17025 - Efficiency Test Lab

Agenda

Powersmiths Training

01

Socomec Story

02

Product Presentation

PDU

RPP

RTS

STS

ESS

UPS

Transformers

Metering



03

Contact information

Remote Power Panel

ENERGY STATION RPP



FLEXIBILITY



Small Footprint

Free Standing Remote Power Panels with Safe Maintainable Features

Application

- Used downstream of PDU to supply power to critical loads
- Modular & Configurable for Each Application
- Compact: 24" x 24" or 24" x 12"
- Stand Alone or Integrable with PDU Products
- Web-server for live and direct access monitoring
- 360° IR Port
- Easy to deploy and Install



Agenda

Powersmiths Training

01

Socomec Story

02

Product Presentation

PDU

RPP

STS

RTS

ESS

UPS

Transformers

Metering



03

Contact information

Static Transfer Switching System

STATYS PS



Full Redundancy



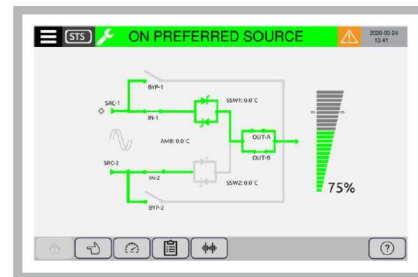
Fast Replacement



Safe Maintainable Features

Protect Critical and Sensitive Equipment

- Front Only Access
- Redundant Design
- Safe Maintainable Features
- Fast Replacement
- Low Mean Time to Repair
- Sizes: 400A, 600A, 800A
- Coming Soon: 1000A - 1200A, 1600 - 2000A



STATYS PS Series

• SMALL FOOTPRINT

True front-only access
Top / Bottom Connection

• HMI

Waveform Capture
Advanced Transformer
Switching Management
Status visualization
Guided Maintenance Bypass
Procedure

• BREAKERS

Automatic Molded Case
Switches

- Input
- Output
- Bypass

SCCR: 100kA
100% rated
Kirk Keys



• STATYS INTEGRABLE

30 minutes Power Module
replacement for only one operator
Patented cold swappable
Fully Redundant Design
Fast replacement of fans and
Power supply

Agenda

Powersmiths Training

01

Socomec Story

02

Product Presentation

PDU

RPP

STS

RTS

ESS

UPS

Transformers

Metering



03

Contact information

Back-up Power System

Ride Through System **RTS**



Outdoor Rated
NEMA 3R



Power
Conversion



Low TCO

500KW (Other sizes pending development)

99 + % efficiency (Online)

Flexible modular system

- Bi-Directional Inverter Module
- Static Switch Module
- Battery Module
- PDU available as add-on

NEMA 3R design

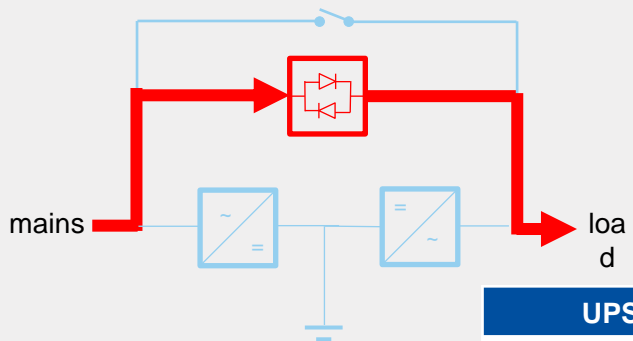
- Save valuable building space
- Easy to deploy and Install

****Expensive Container not required**

UPS

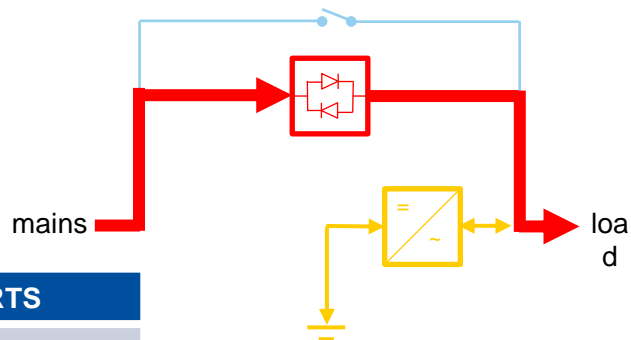
RTS

Eco mode / in line interactive



- > Load powered by Mains via Static Switch
- > Battery charged via DC link

UPS	PQ parameters	RTS
ITIC (/SPD)	Transients	ITIC (/SPD)
ITIC (<1/2 cycle)	Sags / swells	ITIC (<1/2 cycle)
✓	Over-voltages	✓
✓	Under-voltages	✓
ITIC (<10ms)	Backup interruption	ITIC (<10ms)
Bypass	Over-current	✓
~99%	Efficiency	99%



- > Load powered by Mains via Static Switch
- > Inverter active, (not in standby)
 - » Charges Battery
 - » Corrects Load PF



High Efficiency

99% efficiency which is comparable as a line interactive UPS



Native Outdoor

Designed to operate natively outdoor. Utilizing liquid cooling loops for the power switching and conversion stages



ITIC Compliant

The system is designed to provide reliable backup power to prevent loss of critical data and equipment in case of any disturbances outlined in the ITIC curve



High Reliability

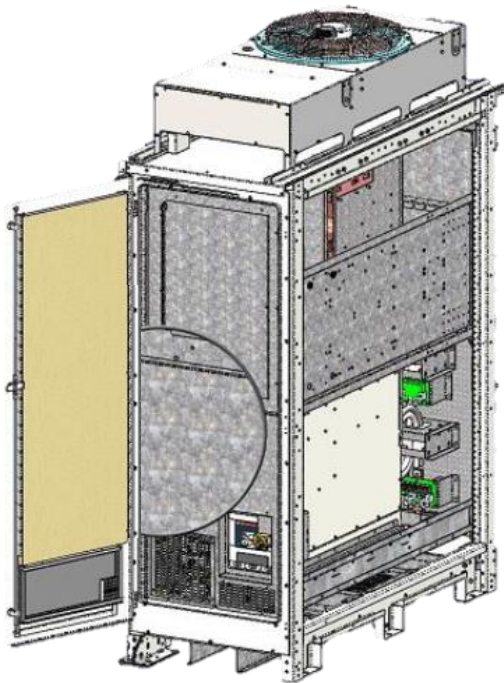
The ride through system operates in main on primary source with converter as backup. Components are less stressed



Low TCO

This is a native outdoor system which doesn't require any container and a very high efficient system

RTS C-Cab Converter Cabinet



High Reliability



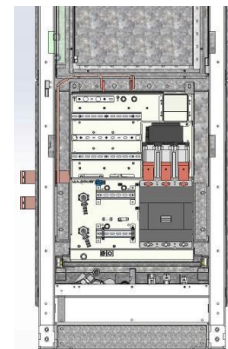
Power
Conversion



Low TCO

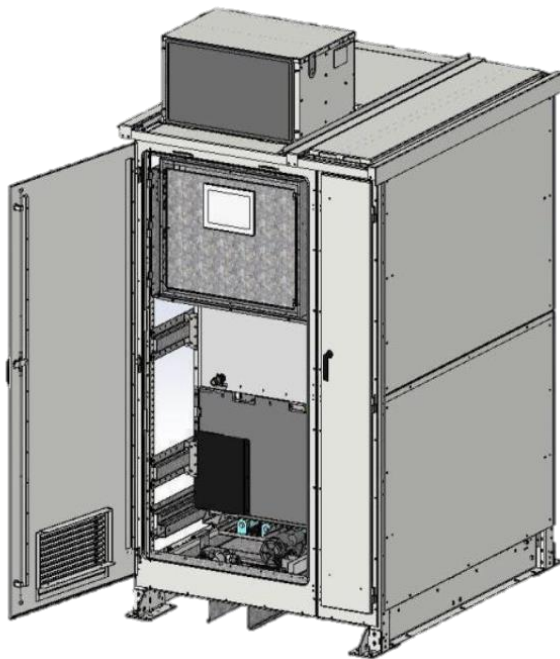
Bi-directional inverter

- > High reliability
 - » Low stressed component
 - » Safe
- > Water cooling
- > Swappable converter
- > Inverter Control section
- > HMI



RTS S-Cab

Switching Cabinet



High Efficiency



Fast Switching

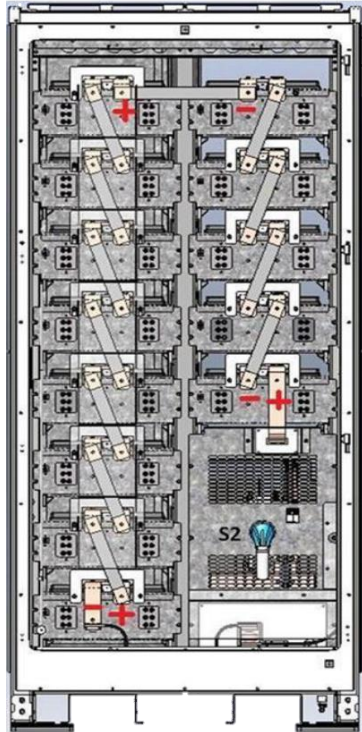


ITIC
Compliant

Static-Switch

- > ATSM
 - » Transformer flux management
- > Walk in
 - » smooth power transition from battery to mains
- > Surge protection
 - » Overvoltage protection
- > Water cooling
- > Integrated true maintenance bypass
 - » Kirk Keys
 - » Service the major components
- > Swappable Static-Switch
 - » Safe maintainability
- > SCCR Rated: 65kAIC

RTS B-Cab Battery Cabinet



Outdoor Rated
NEMA 3R



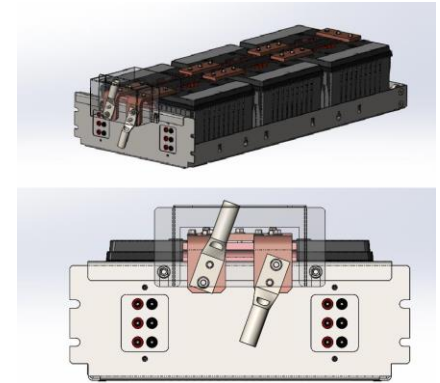
Temperature
Controlled



Back-up
Time

DC Storage

- > 5 minutes BUT
- > Lead acid
- > Active air condition
- > PF correction
- > Patented battery trays
 - » Ease of operation



Agenda

Powersmiths Training

01

Socomec Story

02

Product Presentation

PDU

RPP

STS

RTS

ESS

UPS

Transformers

Metering



03

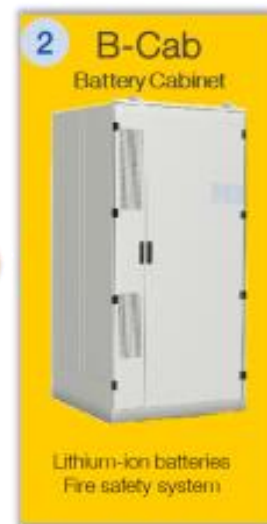
Contact information

SUNSYS HES L

Systems for your need



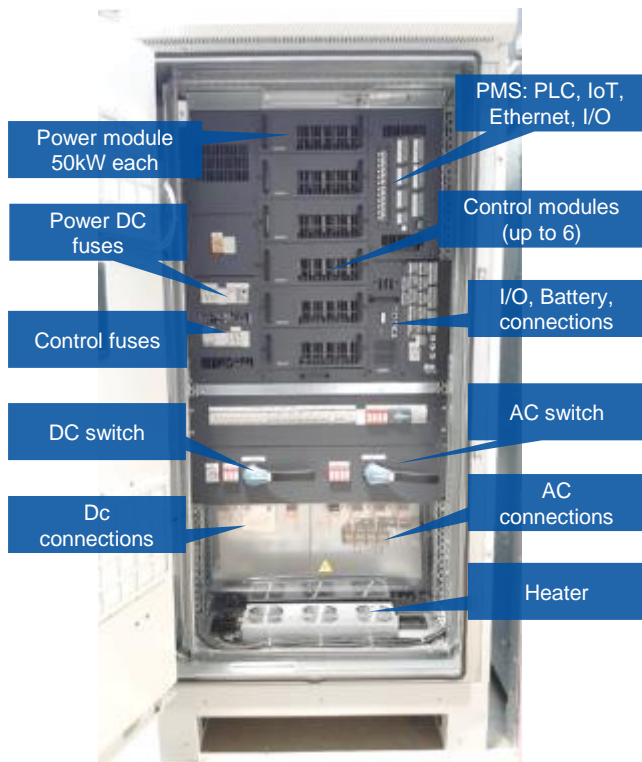
**+ Safety
Compact**



SUNSYS HES L C-Cab

From 50 to 550 kVA

*1 Master + 1 Extension



Highly modular for
native outdoor

Manufactured in Europe

Easy connection

Much more than a simple PCS...

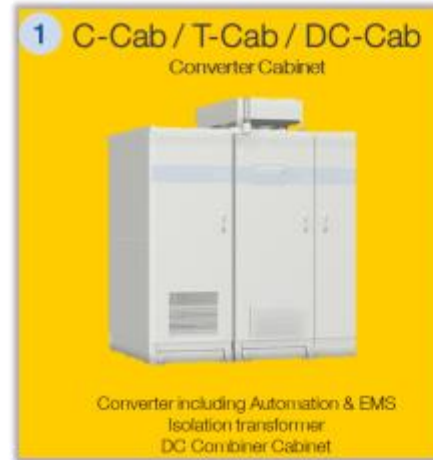
- Includes
 - > Converter modules with their control
 - > Automation functions
 - > AC and DC distribution and protections
 - > Battery management system
 - > Cloud interaction
 - > EMS
- Native outdoor, NEMA 3R / IP54
- UL 1741, California Rule 21 & HECO Rule 14H
- IEC certified
- On and off-grid operation, with smart transition, capability
- 588VDC – 860VDC

SUNSYS HES XL

2 standard bricks, to build your own modular ESS

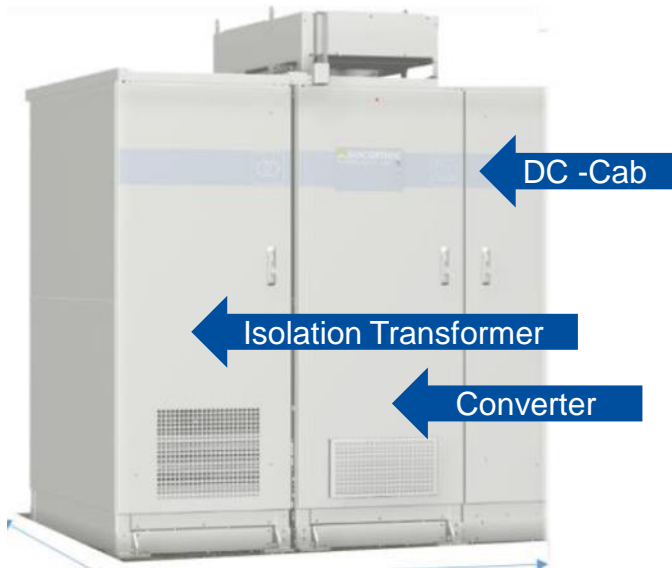


+ Safety
Flexibility



SUNSYS HES XL C-Cab

From 500 kVA to 3MVA



Rapid and straight
forward installation
All one piece

Manufactured in North
America

Native outdoor

“Power Drawer” core of the HES XL family...

- Includes
 - > EPC Power Converter
 - > Isolation transformer
 - > Automation functions
 - > AC and DC distribution and protections
 - > Battery management system
 - > Cloud interaction
 - > EMS
- NEMA 3R with heat exchanger
- Isolation transformer included
- UL 1741, California Rule 21 & HECO Rule 14H
- On and off-grid operation, with smart transition, capability
- Possible combination for multi-MW systems
- 874 VDC – 1125 VDC

Document reference
8 April 2025

31

SUNSYS HES L B-Cab

186 kWh / rack HES L



Energized
by
CATL



SUNSYS HES XL B-Cab

279 kWh / rack HES XL



Lithium Iron Phosphate
(LFP) chemistry type
batteries

UL9540 A fire tested

Ready to use: delivered with
the modules installed and
wired

Outdoor liquid-cooled
integration

Limited maintenance, as no
HVAC is needed

Fire safety included

0.5C

Long life duration

Document reference
8 April 2025

32

Agenda

Powersmiths Training

01

Socomec Story

02

Product Presentation

PDU

RPP

STS

RTS

ESS

UPS

Transformers

Metering



03

Contact information

Modular UPS solution

MODULYS GP



From 25 to 100 + 25 kW



Scalable Hot-plug-in



Online Double
Conversion (VFI)



Low TCO

Easy to commission and maintain !

Fully modular system

- Hot swappable:
 - > power module
 - > battery module
 - > bypass module

Redundant design

- Totally independent power modules

IEC UPSs



ULTIMATE

Fault tolerant power without compromise

Fully redundant architecture for maximum availability, minimum MTTR & risk free maintenance.



MODULYS 1PH
5-20 KW



MODULYS GP 2.0
25-600 KW



200-4800KW
Modular High Power



STATYS
32-1800 A



SUPERIOR

Unrivalled power performance

Best in class & certified performance to optimize usage & Total Cost of Ownership



NETYS RT
1.1-11kVA



STATYS XS
16-32 A



MASTERYS GP4
10-160 kW



DELPHYS GP
200-800 kW



DELPHYS MX
250-900 kVA



MASTERYS IP+
10-80 kVA



PRIME

Trustworthy Power

Reliable and cost effective protection to assure operational continuity



NETYS - ITYS
0,6 to 10kVA



MASTERYS BC+
10-160 kVA



DELPHYS BC
200-300 kVA



DELPHYS MP elite+
80-200 kVA



CPSS Emergency
1.5-200 kVA

Agenda

Powersmiths Training

01

Socomec Story

02

Product Presentation

PDU

RPP

STS

RTS

ESS

UPS

Transformers

Metering



03

Contact information

ULTRA EFFICIENT LOW-VOLTAGE TRANSFORMERS

OPAL™ Series Transformers



Exceed DOE2016
20-50%



32 Year Pro-rated
Warranty



Lowest Life
Cycle Cost

Low-Voltage Transformers Optimized for Energy Savings

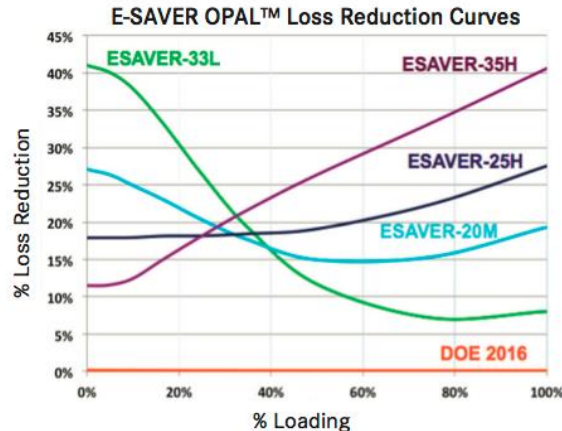
Application:

- **Buildings:** Commercial, Industrial, Healthcare, Education, Military, Federal, Municipal, Institutional, Transit, Broadcasting, Datacenters, etc.
- **Buildings with energy reduction objectives:** LEED, Net Zero, Sustainably Designed, High Energy Rates, etc.
- **Optimized for specific applications and load profiles** (Refer to Comparison Matrix for models & applications)



OPAL Series™

- E-Saver OPAL Series™ Low-Voltage Dry-Type Isolation Transformers Maximize Energy Savings
 - Multiple Models (33L, 35H, 25H, 20M) Optimized for Various Load Profiles
 - OPAL Series™ Deliver 30-50% Less Energy Waste than DOE 2016 Standard Transformers
- 32-Year Performance Guarantee
- Integrated Meter Options
- Low Lifecycle Cost
- UL Listed CA/US
- 600V



Agenda

Powersmiths Training

01

Socomec Story

02

Product Presentation

PDU

RPP

STS

RTS

ESS

UPS

Transformers

Metering



03

Contact information

Power Monitoring

*Elevating power monitoring to a new level.
Infinite scalability. Unique versatility. Unrivalled intelligence.*

- Power metering and monitoring system
- Power monitoring device
- Enclosed power metering and monitoring system
- Smart current sensors
- Gateway, datalogger and software



DIRIS Digiware D



DIRIS Digiware S



WattNode



iTR sensor



Accu-CT .333mV



DIRIS Digiware M



DIRIS DigiBOX M



Enclosed WattNode

Power metering and monitoring system



DIRIS Digiware D



DIRIS Digiware U
and Udc

- Single centralized control unit
- One display to locally or remotely visualize measurements and communicate over multiple open-based protocols
- With or without embedded energy management software

- VAC & VDC voltage acquisition module
- Unique voltage measurement module for entire system
- Metering, monitoring and power quality analysis versions



DIRIS Digiware I
and Idc

- VAC & VDC current acquisition module
- With 3, 4 or 6 RJ12 plug and play current inputs
- Adding multiple current modules allows to customize your system based on the number of circuits to monitor



DIRIS Digiware S

- All-in-one current acquisition module with sensors
- Up to 63 A
- Best compactness/performance ratio on the market

THE EXPERT'S EYE



“Full of innovation, DIRIS Digiware S is the ideal solution to monitor circuits powering IT equipment. This product is suitable for busway and PDU distributions, has high measurement accuracy, and tracks the breaker status on each outgoing circuit.”

Power monitoring device



DIRIS A-40

- Door mounted power metering and monitoring device
- Compatible with plug and play smart sensors, solid, split or flexible types
- Configuration wizard with automatic error correction
- Available with multiple protocols



DIRIS B

- Panel/DIN rail mounted power metering and monitoring device with remote display option
- Compatible with plug and play smart sensors, solid, split or flexible types
- Quick and error-free wiring



DIRIS A-30/A-20

- Door mounted power metering and monitoring device
- Compatible with any 1 or 5 A secondary CTs
- Customizable solution with optional plug-in modules



DIRIS A-10

- Panel/DIN rail mounted power metering and monitoring device
- Compatible with any 5 A secondary CTs
- Multi-measurement, with or without RS485

THE EXPERT'S EYE



“With its ease of integration, configuration and connectivity, the DIRIS A range reinvents the power monitoring device.”

Agenda

Powersmiths Training

01

Socomec Story

02

Product Presentation

03

Contact information



FOLLOW US !



**A 100 thanks
for your attention**



100
years
OF SHARED ENERGY
1922 — 2022

